

Limnion Stocking Cap



Limnion(n.) - lower and colder layer, diminutive of the Greek for "lake"

I had the pleasure of spending the Christmas holiday in Minnesota at my partner's mother's house.

She gifted me these beautiful natural brown and tan yarns from Goth Farm Yarn and I just knew they had to be stocking cap inspired by that lake.

The Limnion Stocking Cap's color work patterning is meant to convey the strata of a lake, where different types of organisms thrive, even with a thick layer of ice on top. The stocking wears with a long floppy pom-pom on the end and the red alpaca and Navajo

churro are incredibly warm for ice-fishing and ski trips.

Please share your action shots and finished hats with the hashtag #LimnionStockingCap

*Designed by Tommy Schafer
(@edible_chrome on instagram)*

Questions or issues with the pattern can be directed to @tschafer47 on Ravelry or tschafer47@gmail.com

This pattern is FREE and should not be sold, feel free to give copies to your friends! If you liked this pattern and would like to support my work and vision of a future with more **pay-if-you-like-it patterns**, contributions can be sent to one of the following:

Venmo: @ToastedBrioche

Paypal: tschafer47@gmail.com

CashApp: \$ToastedBrioche

Or feel free to contact me about other options

www.tommyplayswithfiber.com

Limnion Stocking Cap

Sizes

1(2,3,4) [extra small,(small, medium, large)]

Dimensions

18(18,18,18) inches, length from bottom edge to pom-pom attachment

19(21,23,25) inches, circumference of hat opening

1 inch, ribbing length

Materials

Suggested Needles

1 US #7 (4.5 mm) circular, 16"

1 Set of 4 or 5 US #7 (4.5mm) double-pointed needles

1 US #6 (4.0 mm) circular, 16"

(Or needles to obtain desired gauge, 1 size/0.5mm difference between ribbing and body needles, smaller needles for ribbing. You may also use two circulars or do magic loop for the small circumferences at the top of the cap)

Notions

1 Beginning of round stitch marker

Crochet hook, for provisional CO, I typically use my trusty size F hook

Waste yarn, 2 yards (a smooth yarn, like cotton)

1 Tapestry needle

1 Pom-pom maker, your hand, cardboard, however you like to make pom-poms!

Gauge

22 stitches and 24 rows per 4" x 4" square in stranded color work, in the round, using suggested needles, blocked

Suggested Yarn

MC: 1(1,1,2) skeins Goth Farms Yarns, Utisol, Red Alpaca (~185yds/95g)

CC: 1(1,1,1) skein Goth Farms Yarn, Slate, Navajo Churro (~185yds/95g)

Or other similar weight worsted yarn in contrasting colors

Yardage

MC: (170,185,200) yds

CC: 90(95,100,110) yds

I recommend using two new balls of worsted yarn, with 200 yds each you should be able to make any of the 4 sizes. My sample version ,size 3, used 185 yds of MC (Utisol)100 yds of CC (Slate) including a large 3 inch diameter pom-pom. Yardage calculations includes the large pom pom.

Abbreviations

K: Knit.

P: Purl

SSK: Slip 2 sts knit wise to the right needle, Knit together through back loops

Limnion Stocking Cap

BOR: Beginning of round

Rnd(s): Round(s)

CO: Cast On

BO: Bind Off

MC (DC): Main Color (Dark Color)

CC (LC): Contrast Color (Light Color)

--: Repeat between asterisks number of times specified

Techniques, Special Stitches

Provisional Cast On: This is my new favorite provisional CO method, with no crochet chain to start, you can simply pull out a single yarn without worrying about catches once the CO is complete. See “Way #2” in the link, there is also a helpful video link in this instructional page: <https://www.10rowsaday.com/provisional-caston>



Two-handed stranded color work in the round: Brooklyn Tweed has a great tutorial on this here: <https://brooklyntweed.com/pages/stranded-colorwork-101>

I highly recommend holding the MC in the right hand and the CC in the left hand and when floats are more than 7 sts wide, holding the CC in between the needles and the wrap of the MC to hold the float on the WS of the work.

Tubular CO: This is explained in the body of the pattern instructions.

Instructions

With waste yarn and **smaller** needle, provisionally CO 90(100,110,120) sts. Place BOR marker and connect in the round, being careful not to twist.

Tubular CO Rnds:

Rnd 1: * K1, Sl1 Pwise wyif * across rnd

Rnd 2: * Sl1 Pwise wyib, P1 * across rnd

Main Ribbing

Rnds 3-8: * K1, P1 * across rnd.

Body (Switch to larger needles while working next rnd)

Starting at the bottom right corner of Chart 1. work across chart from right to left 9(10,11,12) times to BOR. Work rows 1-50 in Chart 1. Optionally, place a stitch marker between each chart repeat to help keep track of your place.

After completing Chart 1. continue with Chart 2. from the bottom right corner as well.

After Chart 2. is complete, break MC and CC leaving 12-inch tails.

Pull tails through remaining 9(10,11,12) sts and tighten.

Limnion Stocking Cap

Finishing

Weave in all ends. Wet block to measurements before attaching pom-pom.

Pom-Pom

Holding 1 strand each of your MC and CC, and using a pom pom maker (I used a 1.5" one to make a 3" pom pom), wrap the inner portion of each "C" until full of your yarn and close back to the center of the pom pom maker. Repeat on the other "C". Starting at the hinge-end of one C, and holding the pom pom maker tightly closed, cut down into the groove, until all wraps have been cut in half. Repeat on the other side. Using an 18" length of strong yarn like cotton, wrap around the groove of the pom-pom maker and tie tightly. I usually repeat this several times and tie multiple knots to ensure the pom-pom will stay together. Release the tied bundle from the pom pom maker and fluff out your pom pom. Trim yarn ends with sharp scissors until your pom pom is the desired shape. A video tutorial can be found here: https://www.youtube.com/watch?v=W7tb_9YKoMU

After the stocking cap has been blocked and dried, thread the two ends of your cotton yarn from the pom pom down into the center of the stocking cap's tip. Turn the stocking cap inside out and pull the cotton yarn completely through to the WS. Thread the yarn through a few stitches and pulling the pom pom tightly, tie a knot to hold the pom pom in place. When tying, you want to pull tightly to ensure your pom pom is attached to the end of the stocking cap. Pickup more WS floats and tie more knots if you're concerned with your pom pom falling off. Weave in ends of Pom-Pom attachment yarns, or trim them shorter and allow them to float freely in the top of the stocking. And your cap is complete!

Limnion Stocking Cap

Charts
Chart 1.

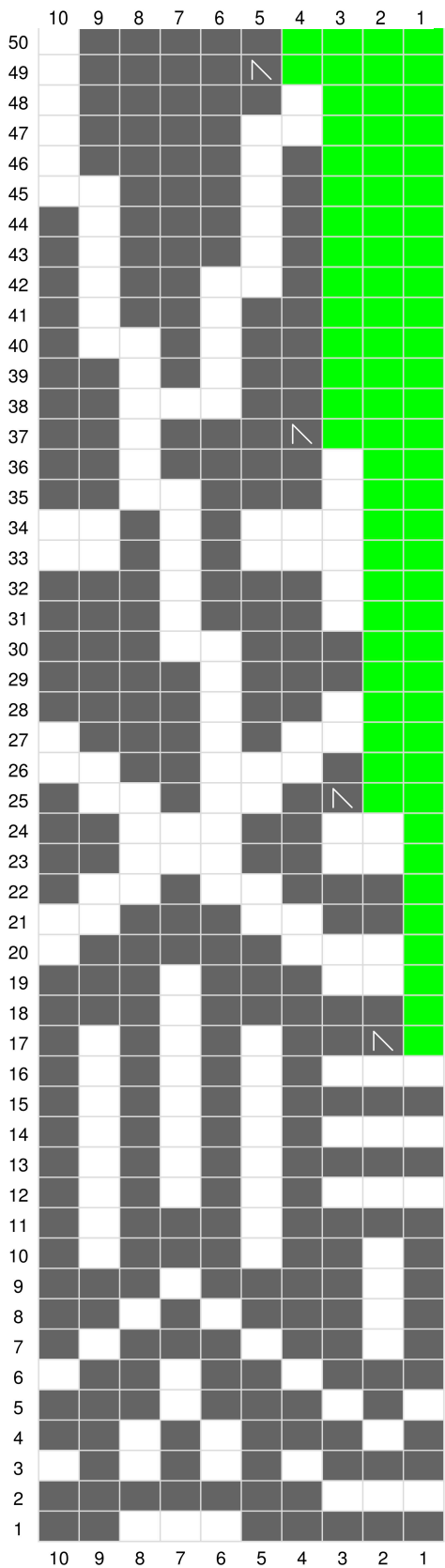
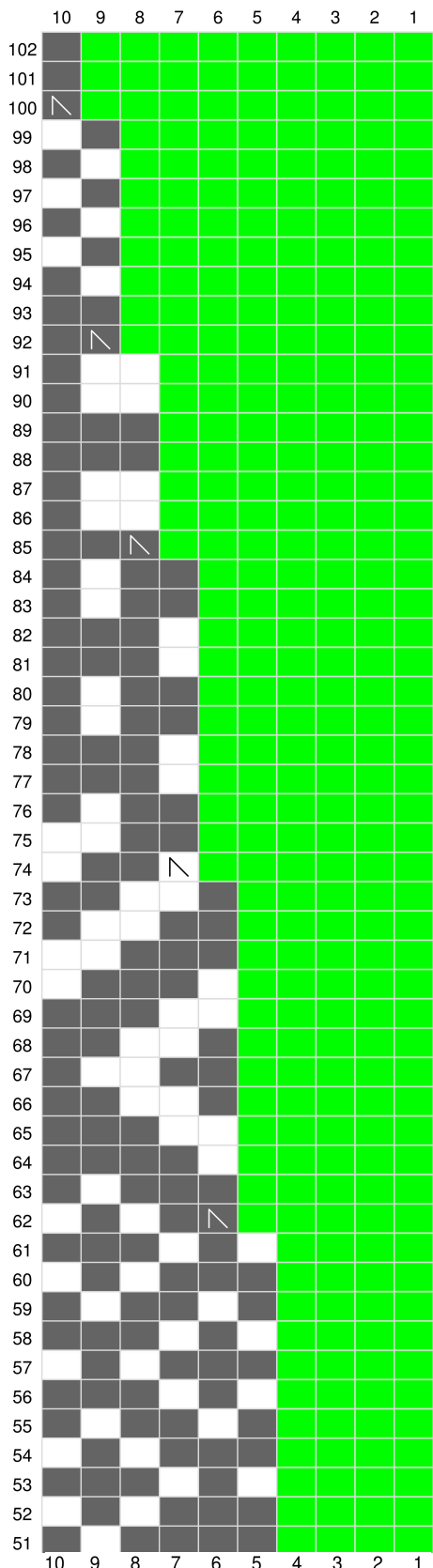


Chart 2.



- Knit Light Color
- Knit Dark Color
- No Stitch
- SSK DC
- SSK LC