



# Prairie Window Sweater

The Prairie Window sweater is inspired by prairie style art glass windows, specifically the window work from the, Frank Lloyd Wright-designed, Dana-Thomas Home, near my hometown in Springfield, IL. The motif conjures the movement of sumac branches and the stillness of snow. This design boasts stranded color work, top-down sweater construction with a dropped underarm, folded collar, and angular sleeves. It's fuzzy, warm, but breathable Lopi fabric will wear well through both equinoxes and winter.

*Please share your progress pictures and finished sweaters with the hashtag #PrairieWindowSweater*

*Designed by Tommy Schafer (They/Them) (@edible\_chrome on instagram)*

*Questions or issues with the pattern can be directed to @tschafer47 on Ravelry or [tschafer47@gmail.com](mailto:tschafer47@gmail.com)*

**This pattern is FREE** and should not be sold, feel free to give copies to your friends! If you liked this pattern and would like to support my work and vision of a future with more **pay-if-you-like-it patterns**, contributions can be sent to one of the following:

**Venmo:** @ToastedBrioche

**Paypal:** [tschafer47@gmail.com](mailto:tschafer47@gmail.com)

**CashApp:** \$ToastedBrioche

*Or feel free to contact me about other options*

[www.tommyplayswithfiber.com](http://www.tommyplayswithfiber.com)

### *Sizes*

A,B,C(D,E,F,G,H)[I,J,K,L,M]

### *Dimensions*

Yoke Depth, 14" (Shorten following *Customization - Shorter Yoke Depth*)

Neck Circumference:

20.0,20.0,22.0(22.0,24.0,24,24.0,24.0)[24.0,24.0,26.0,26.0,26.0] inches

Bust:

36.0,38.0,40.0(42.0,44.0,47,50.0,53.0)[56.0,59.0,62.0,65.0,68.0] inches (meant to be worn between 0 and 4" of ease, when in doubt I would say go slightly larger on your size so there's room to layer as well)

Body Length\*:

14 inches

Sleeve Inseam\*:

14 inches

\*easily adjustable by knitting more or fewer rounds.

### *Materials*

#### *Suggested Needles*

##### *(A) Ribbing*

1 US #6 (4.0mm) circular 16"

1 US #6 (4.0mm) circular 32"

1 US #6 (4.0mm) Set of 4 Double Pointed Needless  
(or 2 sizes smaller than Needle Size C)

##### *(B) Color work*

1 US #9 (5.5mm) Circular 16" (Only if following custom instructions)

1 US #9 (5.5mm) Circular 24"

1 US #9 (5.5mm) Circular 36" or larger for body knitting in the round.  
(or 1 size larger than Needle Size C)

##### *(C) Body Stockinette*

1 US #8 (5.0mm) Circular 16"

1 US #8 (5.0mm) Circular 32"

\*\*Or all widths can be achieve utilizing one long circular if you prefer Magic Loop

At the very least, if one is knitting completely in magic loop, they would need:

3 Extra Long circular needles Needle Sizes A, B, and C

(Or needles to obtain desired gauge)

### *Notions*

Stitch markers, 1 unique for BOR, and 8,9,9(9,10,11,12,13)[13,14,15,16,16] to mark repeats, 4 extra for working customization instructions

1 Tapestry needle

Smooth waste yarn for holding stitches, and provisional cast-on

Crochet hook size G (4.00mm) or smaller, for provisional cast-on

### *Gauge Swatching*

With MC and Needle C, CO 26 sts.

Row 1: K across row

Row 2: Slide work to other end of needle beginning at other end of row and carrying yarn behind the WS of the work, K across row.

Repeat Row 2, 24 more times.

Switch to Needle B

Beginning in Chart 1 at row 32, Work rows 32 - 54 by swatching in the round, carrying each color back to the beginning of the RS row and sliding work to the other end of the needle before working each row from Right to Left.

Lightly block and measure your 4" x 4" stitch and row gauge from this swatch. If you have **more** stitches in 4" than the pattern's gauge measurement consider going up a needle size. You must get correct stitch gauge for the pattern to fit according to the size chosen. If your stitch gauge is correct but your row gauge is larger than the pattern's listed stockinette gauge, this pattern uses length measurement for body and sleeve fit, so row gauge is less important to get in your swatch.



### *Gauge*

18 stitches and 20 rows per 4" x 4" square, Color work, blocked (Needle Size B)

18 stitches and 25 rows per 4" x 4" square, Body Stockinette in the round, blocked (Needle Size C)

### *Yarn*

Lettlopi, Worsted, 100% Icelandic Wool (109yds/50g)

7,7,7(8,8,9,9,10)[10,10,11,12,12] skeins MC (Color "9431")

3,3,3(3,3,3,4,4)[4,4,4,5,5] skeins CC (Color "0086")

(Sample Shown in Main Color (MC): "9431" Contrast Color (CC): "0086")

### *Yardage*

Total: 1013,1096,1128(1204,1232,1313,1393,1474)[1511,1591,1683,1766,1801] yds

MC: 724,783,806(860,880,938,995,1053)[1079,1137,1202,1262,1286] yds

CC: 290,313,322(344,352,375,398,421)[432,455,481,505,514] yds

### *Techniques, Special Stitches*

**Provisional Cast On:** I suggest reviewing the Purl SoHo 2-step method for provisional cast on found here: <https://www.purlsoho.com/create/provisional-cast-on/>



**2-Handed Stranded Color work in the round:** Brooklyn Tweed has a great tutorial on this here: <https://brooklyntweed.com/pages/stranded-colorwork-101>

I highly recommend holding the MC in the right hand and the CC in the left hand and when floats are more than 4 sts wide, holding the CC in between the needles and the wrap of the MC to hold the float on the WS of the work.

**Backwards Loop Cast On:** With WS facing you, Insert needle between two stitches on left needle, Wrap yarn around inserted needle as if to knit and pull a new stitch out from between the original two stitches, and slip new stitch onto left needle, being careful not to twist, (1 stitch CO). Continue in this manner until number of stitches needed is CO. Turn work so RS is facing you and continue with instructions.

### *Abbreviations*

K: Knit

P: Purl

Sl: Slip

St(s): Stitch(es)

K2tog: Knit 2 together (1 stitch decreased)

SSK: Slip 2 sts knit wise to the right needle, Knit together through back loops (1 stitch decreased)

Kfb: Knit into front and back of stitch (one stitch increased)

BOR: Beginning of round

Rnd(s): round(s)

CO: Cast On

BO: Bind Off

MC: Main Color

CC: Contrast Color

RS: Right Side

WS: Wrong Side

Pm: Place marker

\*--\*: Repeat between asterisks number of times specified

yd(d): Yard(s)

### *Instructions*

Using a waste yarn, 16" Needle Size A and crochet hook, provisionally CO 90,90,100(100,110,110,110,110)[110,110,120,120,120] sts. Using CC, K across row, connect in the round being careful not to twist stitches.

Rnds 1-15: \*K1 P1\* across rnd.

Rnds 16-29: \*P1 K1\* across rnd.

Rnd 30: Using Needle C, \*P1 K1\* across rnd.

### *Connect Folded edge of Collar to WS*

Slip stitches from provisional CO onto the Size A smaller circular needle you just used for the neck ribbing.



Remove waste yarn. Fold the CO sts under and inside the work, bringing it behind the top of the working stitches.

Rnd 31: Holding the working needles from each edge together and using your 24", Needle Size B circular needle: Knit 1 round, working 1 st from the larger needle and 1 st from the smaller needle, together into one st.

(90,90,100(100,110,110,110,110)[110,110,120,120,120] sts)

*For Sizes B,D,F,K*

Work the following increase rnd: \*Kfb, K -,8,-(9,-,10,-,-)[-,-,1,-,-]

For size G, only

\*Kfb K4, Kfb, K5\* across rnd

*For Sizes H & I*

K10, \*Kfb, K2 \* to 10 sts before BOR, K10

*For Size J*

K5, \*Kfb, K1, Kfb K2 \* to 5 sts before BOR, K5

*For Sizes L & M*

K10 \*Kfb K1\* to last 10 sts, K10

You should have 90,100,100(110,110,120,130,140)[140,150,160,170,170] sts.

*Yoke Instructions* (See *Customization - Shorter Yoke Depth* instructions at end of pattern if you would like a yoke that splits for sleeves in the color work)

Begin working Chart 1. from bottom right corner, reading right to left

9,10,10(11,11,12,13,14)[14,15,16,17,17] times across each rnd. If you wish you can place a marker between each chart repeat to help keep track.

*After Completing all 67 rnds of the Yoke Chart* you should have

234,260,260 (286,286,312,338,364)[364,390,416,442,442] sts total.

Measure from the bottom of the collar ribbing to the bottom of the yoke. It should measure 14", If it is shorter, K more rnds in MC to achieve a 14" yoke depth, otherwise note that your yoke is a bit short and you may need to add length to the body and sleeves.

If your yoke is longer than 14", check your gauge, and consider re-knitting or having an even further dropped underarm in your finished sweater. Keep in mind that this fabric is not yet blocked, and if you want a more accurate measurement you should take this measurement after the blocking step below.

If you used markers between repeats, remove these, keeping BOR marker in place.

***For Sizes A,-,-(D,E,-,G,-)[-J,-,L,M] Only***

Remove BOR marker.

K 13 sts in MC. Place BOR marker. The BOR indicates the center-back of the sweater. If you're going to block your yoke, break both MC and CC, otherwise just break CC.

***Block to size before splitting sleeves***

Split half the stitches onto another long circular needle and block your yoke, needles and all. If you're using Lopi, work in a deep conditioner so it can soften and bloom (unless you think you may rip back, in that case only lightly block in water), then roll in a towel and press the water out by stepping on the roll. Unroll and give your yoke a quick shake in the air. Block by pinning and drying to the measurements for your size. These should be:

*Neck Circumference:* 20.0,20.0,22.0(22.0,24.0,24,24.0,24.0)[24.0,24.0,26.0,26.0,26.0] inches

*Yoke depth from ribbing:* 14 inches

*Circumference of yoke's outer edge:* 52.0,58.0,58.0(58.0,64.0,70,76.0,82.0)[82.0,88.0,94.0,100.0,100.0] inches

After blocking is complete, try on your yoke and ensure that it fits to your liking, and is adequately below your underarm for splitting the sleeves.

Slip all stitches back onto your longest circular needle of Needle Size C, to begin working stockinette in the round.

***Split Sleeves***

From BOR, using MC,

K 36,40,39(43,44,48,53,57)[57,62,66,70,71] sts,

place next 45,51,52(57,56,60,64,68)[68,72,76,82,80] sts on waste yarn

Backwards Loop CO 9,7,12(9,12,10,8,6)[12,10,8,6,12] sts,

K 72,79,78(86,87,96,105,114)[114,123,132,139,141] sts of front yoke edge

Place next 45,51,52(57,56,60,64,68)[68,72,76,82,80] sts on waste yarn,

Backwards Loop CO 9,7,12(9,12,10,8,6)[12,10,8,6,12] sts

K 36,39,39(43,43,48,52,57)[57,61,66,69,70] sts of Right Back to BOR.

You should now have 162,172,180(190,198,212,226,240)[252,266,280,290,306] sts in the round for the body.

***Body***

Knit in the round until length from armpit CO sts measures 12" or until 2" less than your desired length.

Using Needle Size A, 32" circular

Rnds 1-12: \*K1 P1\* to end of rnd.

BO loosely in pattern. Break yarn leaving 8" tail, pulling tail through last stitch.

## *Sleeves*

### *Right Sleeve*

Slip 45,51,52(57,56,60,64,68)[68,72,76,82,80] sts of the right sleeve split onto a 16" circular in Needle Size C and remove waste yarn.

Pickup and knit 5,4,6(5,6,5,4,3)[6,5,4,3,6] sts from underarm CO edge, pm, pickup and knit 4,3,6(4,6,5,4,3)[6,5,4,3,6] more sts from underarm CO edge.

K across 45,51,52(57,56,60,64,68)[68,72,76,82,80] sts on needle,  
K 5,4,6(5,6,5,4,3)[6,5,4,3,6] picked up sts to BOR.  
(54,58,64(66,68,70,72,74)[80,82,84,88,92] sts) —> Continue to *Both Sleeves*

### *Left Sleeve*

Slip 45,51,52(57,56,60,64,68)[68,72,76,82,80] sts of the right sleeve split onto a 16" circular needle in Size C and remove waste yarn.

Pickup and knit 4,3,6(4,6,5,4,3)[6,5,4,3,6] sts from underarm CO edge, pm, pickup and knit 5,4,6(5,6,5,4,3)[6,5,4,3,6] more sts from underarm CO edge.

K across 45,51,52(57,56,60,64,68)[68,72,76,82,80] sts on needle,  
K 4,3,6(4,6,5,4,3)[6,5,4,3,6] picked up sts to BOR.  
(54,58,64(66,68,70,72,74)[80,82,84,88,92] sts) —> Continue to *Both Sleeves*

### *Both Sleeves*

K 9,10,5(15,11,19,15,11)[18,21,18,18,12] rnds.

### *Decrease Rounds*

SSK, K to last 2 sts, K2tog

Knit 5,4,4(3,3,3,3,3)[2,2,2,2,2] rnds

Repeat *Decrease Rounds* an additional 10,12,13(14,15,13,14,15)[18,17,18,18,20] times, switching to same needle size DPNs or magic loop when the number of stitches becomes too few on your circulars.

(32,32,36(36,36,41,41,41)[41,46,46,50,50] sts)

Continue knitting until sleeve measures : 14" inches or 2" less than your desired length.

Using Needle Size A DPNs or large circular needle for magic loop,

Rnds 1-12: \*K1 P1\* to end of rnd.

BO loosely in pattern. Break yarn leaving 8" tail, pull tail through last stitch.

### *Finishing*

Wet block sweater to measurements. Tighten any loose holes created in armpits with extra yarn and close gaps in BOR BO edges using 8" tails. Weave in all ends.



### *Customization - Shorter Yoke Depth*

#### **NOTES:**

1. You can split the sleeves in the color work anywhere after Round 33 in Chart 1.
2. I use "Continue working in Chart 1." to indicate that, although the underarm stitches disrupt the Chart 1. repeats, you should act as though the underarm stitches are separate from Chart 1. and continue where you left off in Chart 1. when not working the underarm CO stitches in its specific chart.
3. This customization will alter the length of your body and sleeves, so be sure to keep measuring while you work.
4. DISCLAIMER: These instructions are in beta and will be updated on Ravelry if issues arise.

#### *Instructions*

To shorten your yoke and compensate for color work in the underarm, first determine which round in Chart 1. is the round where you would like to split your sleeves. You can do this by calculating the number of rounds in your color work gauge that will yield the inch measurement of your desired yoke depth.

Desired Yoke Depth: \_\_\_\_ inches from collar (write here)

Using the pattern's suggested gauge: Round # of sleeve split = (Desired Yoke Depth in inches) x 5 (rounds/inch)

(e.g. an 11" yoke depth would be split on round 55 if your gauge matches the pattern gauge)

Sleeve Split Round Number Result: \_\_\_\_\_ (write here).

*For Sizes A,-,-(D,E,-,G,-)[- ,J,-,L,M] only*

Remove BOR marker.

Work 13 sts in current round of Chart 1. Place BOR marker. The BOR indicates the center-back of the sweater. This ensures that the color work is centered on the Front of the sweater. (BOR shifted 13,-,-(13,-,-,13,-)[- ,13,-,13,13] sts left)

Counting from BOR marker across round, insert distinct markers (So they don't get confused with color work markers if you have marked the Chart 1. repeats) after stitch numbers:

Marker 1: 36,40,39(43,44,48,53,57)[57,62,66,70,71]

Marker 2: 81,91,91(100,100,108,117,125)[125,134,142,152,151]

Marker 3: 153,170,169(186,187,204,222,239)[239,257,274,291,292]

Marker 4: 198,221,221(243,243,264,286,307)[307,329,350,373,372]

These markers will serve to ensure that we can keep the underarm color work charts separate from the yoke color work as we transition from the yoke to the body and sleeves. You can block your yoke up to this point if you want to ensure you are splitting the sleeves in the correct place, following the instructions to *Block to size before splitting sleeves* in the standard sizing directions.

### *Split Sleeves*

From BOR, continue working Chart 1. repeats until you come to **Marker 1. Sl Marker 1 to R needle.**

Place next 45,51,52(57,56,60,64,68)[68,72,76,82,80] sts on waste yarn.

Backwards Loop CO 9,7,12(9,12,10,8,6)[12,10,8,6,12] sts in MC. Slip **Marker 2. to R needle.**

Continue working Chart 1. repeats across front of yoke to **Marker 3. Slip Marker 3 to R needle.** Place next 45,51,52(57,56,60,64,68)[68,72,76,82,80] sts on waste yarn.

Backwards Loop CO 9,7,12(9,12,10,8,6)[12,10,8,6,12] sts in MC. Slip **Marker 4. to R needle.**

Continue working Chart 1. to BOR.

You should now have 162,172,180(190,198,212,226,240)[252,266,280,290,306] sts in the round for the body, with markers indicating the sections of the underarm CO stitches that are separate from the normal Chart 1. Repeats.

### *Body Color Work*

From BOR, continue in Chart 1. to **Marker 1.** For underarm stitches, work Chart D,B,E(D,F,E,C,A)[F,E,C,A,F] at corresponding round number to your current Chart 1.

Rnd number. Sl **Marker 2.** Continue in Chart 1, to **Marker 3.** Work Chart D,B,E(D,F,E,C,A)[F,E,C,A,F] at corresponding round number to your current Chart 1.

Rnd number. Sl **Marker 4.** And continue in Chart 1 to BOR marker. Continue in this manner until you have worked all 67 rounds of Chart 1. color work and corresponding Chart D,B,E(D,F,E,C,A)[F,E,C,A,F] color work between underarm markers.

### *Remainder of Body*

To finish working the *Body*, Break CC, Switch to Needle Size C and Knit in the round until length from end of color work measures 12" or until 2" less than your desired length.

NOTE: The length from underarm will be determined by how early you split the sleeves.

Using Needle size A 32" circular

Rnds 1-12: \*K1 P1\* to end of rnd.

BO loosely in pattern. Break yarn leaving 8" tail, pulling tail through last stitch.

### *Sleeve Color Work*

#### *Right Sleeve*

Slip 45,51,52(57,56,60,64,68)[68,72,76,82,80] sts of the right sleeve split onto a 16" circular needle in Size B and remove waste yarn.

Using MC, Pickup and knit 9,7,12(9,12,10,8,6)[12,10,8,6,12] sts from Underarm CO edge. Place marker, Continue in Chart 1 across stitches that were held on waste yarn.

Place marker (This is the new BOR marker for this sleeve)

(54,58,64(66,68,70,72,74)[80,82,84,88,92] sts)

Work across Chart D,B,E(D,F,E,C,A)[F,E,C,A,F] between BOR and marker placed after Underarm stitches were picked up. Continue in Chart 1. Across remaining stitches to BOR.

Continue in this manner until you have worked all 67 rounds of Chart 1. color work and corresponding Chart D,B,E(D,F,E,C,A)[F,E,C,A,F] color work between underarm markers. Using MC, Knit 4,3,6(4,6,5,4,3)[6,5,4,3,6] stitches left and break CC. Remove BOR marker and place here (center of underarm) Switch to Needle Size C.

Finish Right Sleeve by following the “For Both Sleeves” Instructions but by measuring from the end of the color work instead of the underarm CO edge. (To compensate for the extra sleeve length due to the raised underarm)

#### Left Sleeve

Slip 45,51,52(57,56,60,64,68)[68,72,76,82,80] sts of the left sleeve split onto a 16” circular needle in Size B and remove waste yarn.

Using MC, Pickup and knit 9,7,12(9,12,10,8,6)[12,10,8,6,12] sts from Underarm CO edge. Place marker, Continue in Chart 1 across stitches that were held on waste yarn. Place marker (This is the new BOR marker for this sleeve)  
(54,58,64(66,68,70,72,74)[80,82,84,88,92] sts)

Work Across Chart D,B,E(D,F,E,C,A)[F,E,C,A,F] between BOR and marker placed after Underarm stitches were picked up. Continue in Chart 1. Across remaining stitches to BOR.

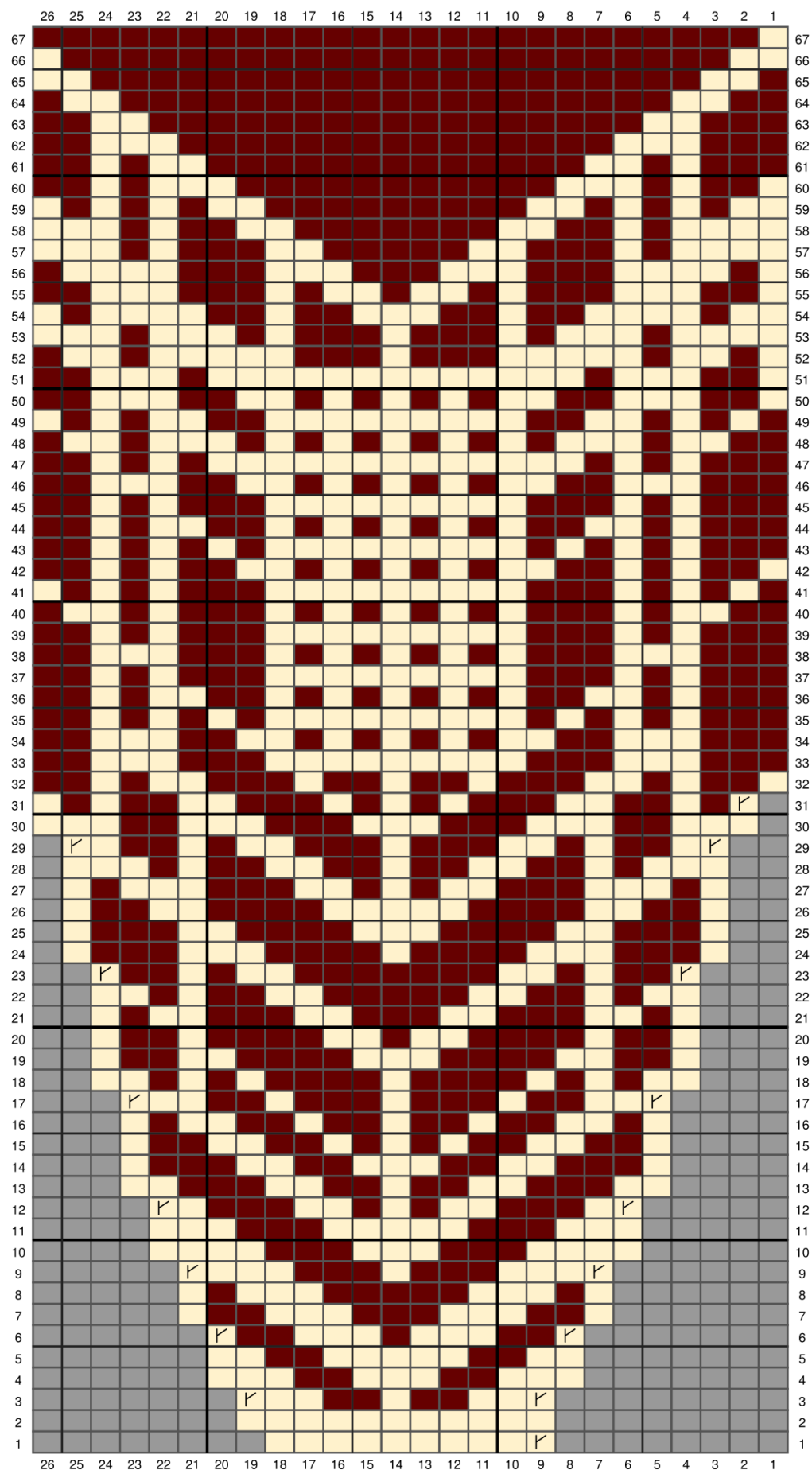
Continue in this manner until you have worked all 67 rounds of Chart 1. color work and corresponding Chart D,B,E(D,F,E,C,A)[F,E,C,A,F] color work between underarm markers. Using MC, Knit 4,3,6(4,6,5,4,3)[6,5,4,3,6] stitches and break CC. Remove BOR marker and place here (center of underarm) Switch to Needle Size C.

Finish Left Sleeve by following the “For Both Sleeves” Instructions but by measuring from the end of the color work instead of the underarm CO edge. (To compensate for the extra sleeve length due to the raised underarm)



# Charts

- Knit in MC
- Knit in CC
- Kfb in CC (1 st Increase)
- No stitch



# Charts (cont.)

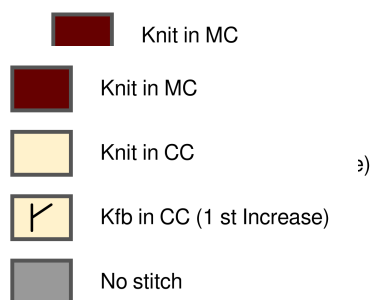
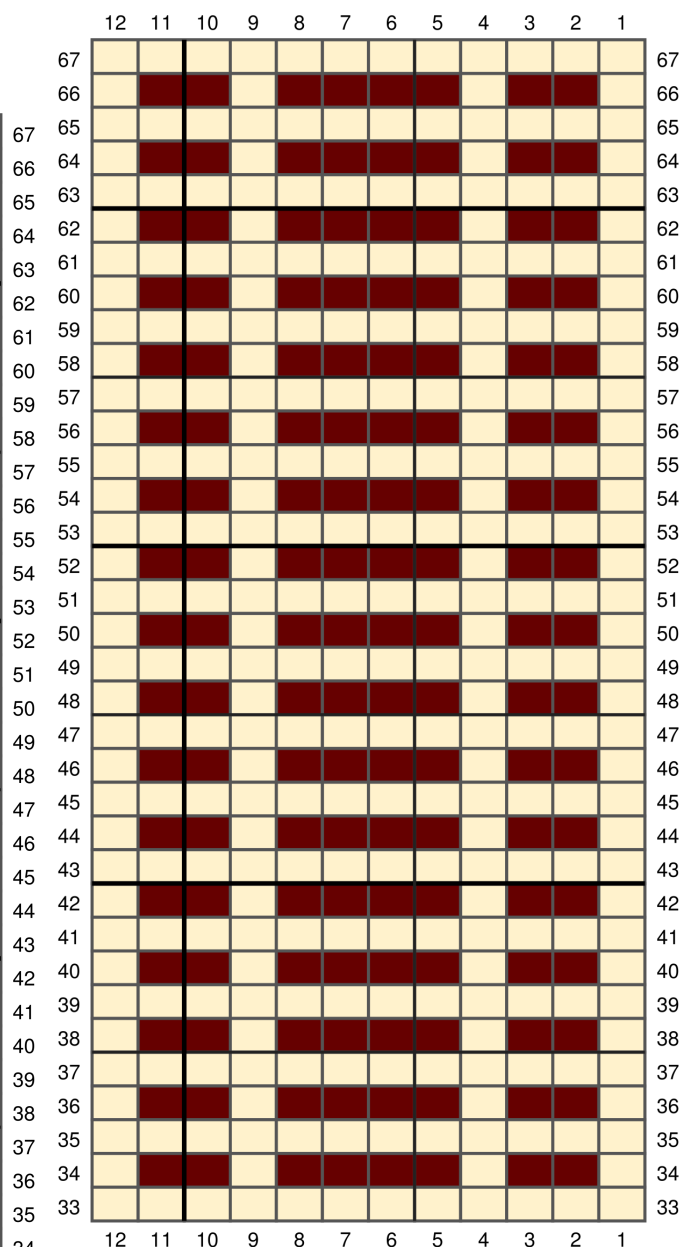
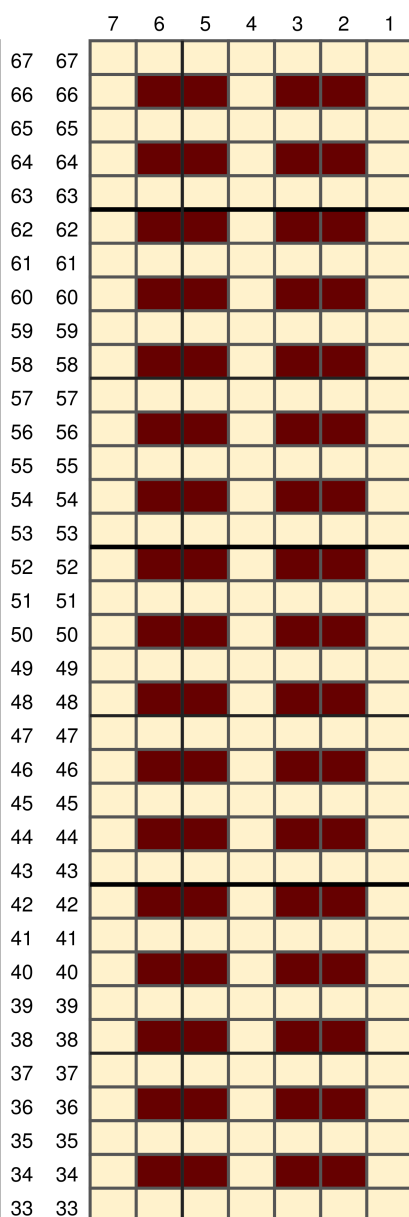
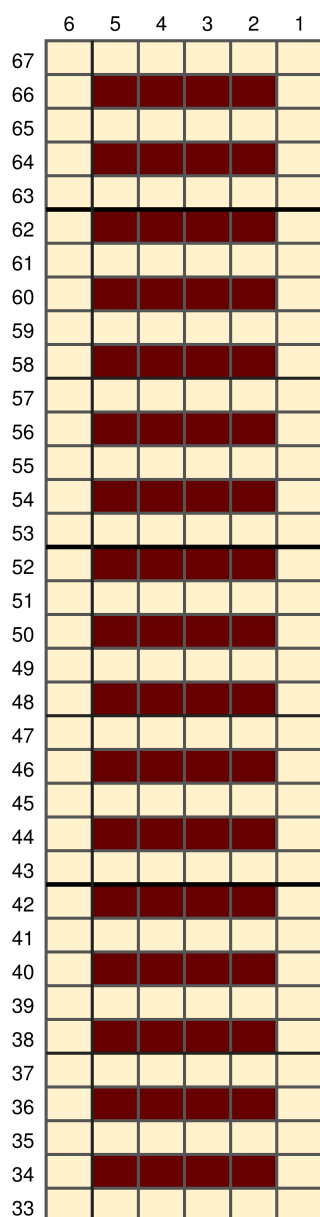
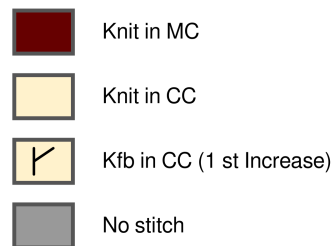


Chart A.  
Chart F.

Chart B.



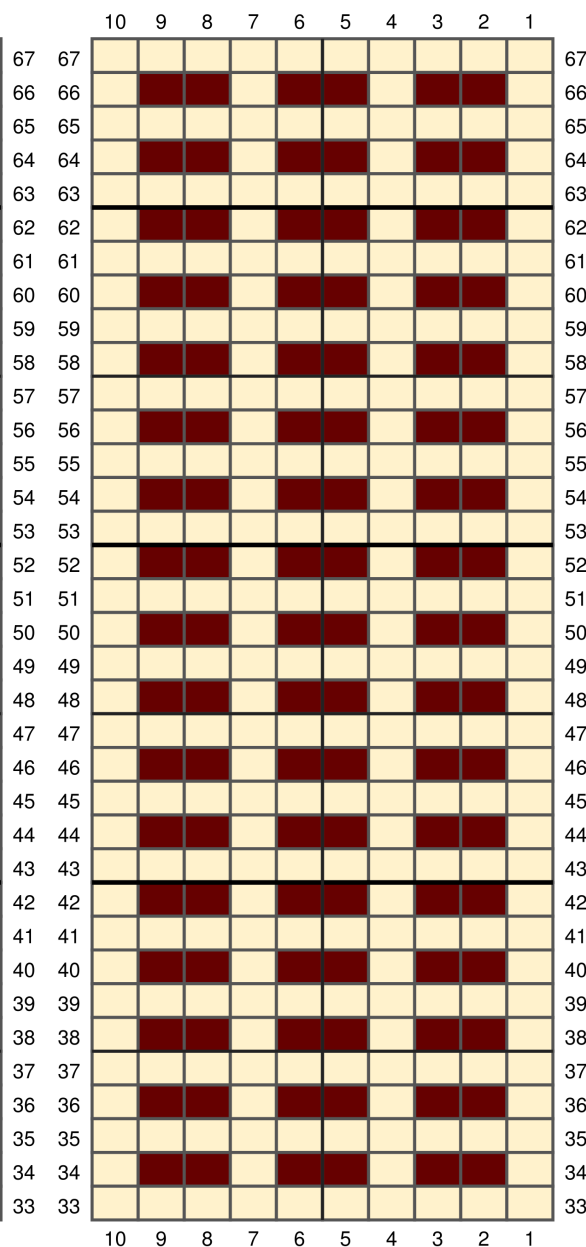
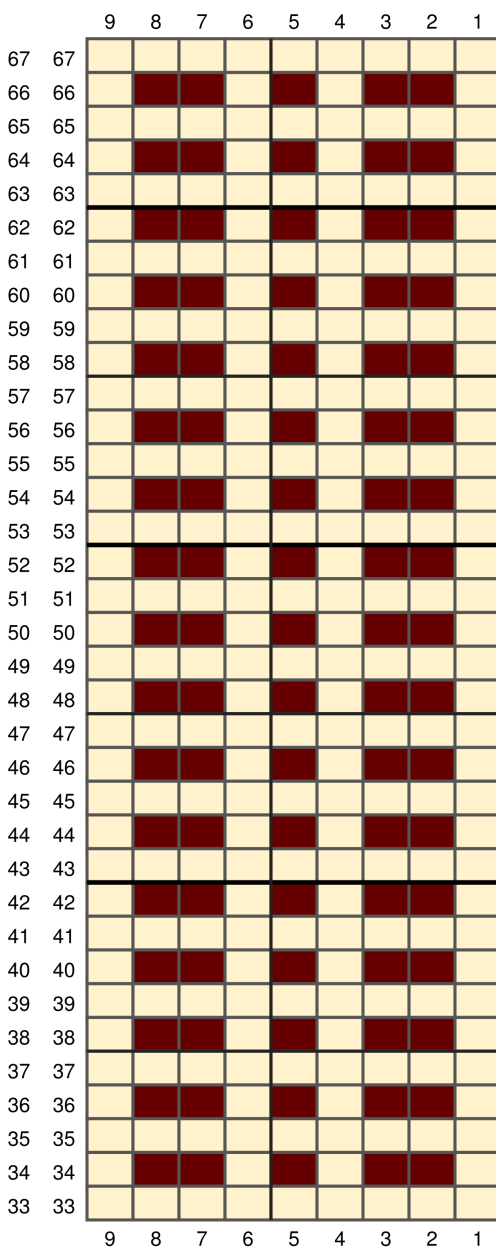
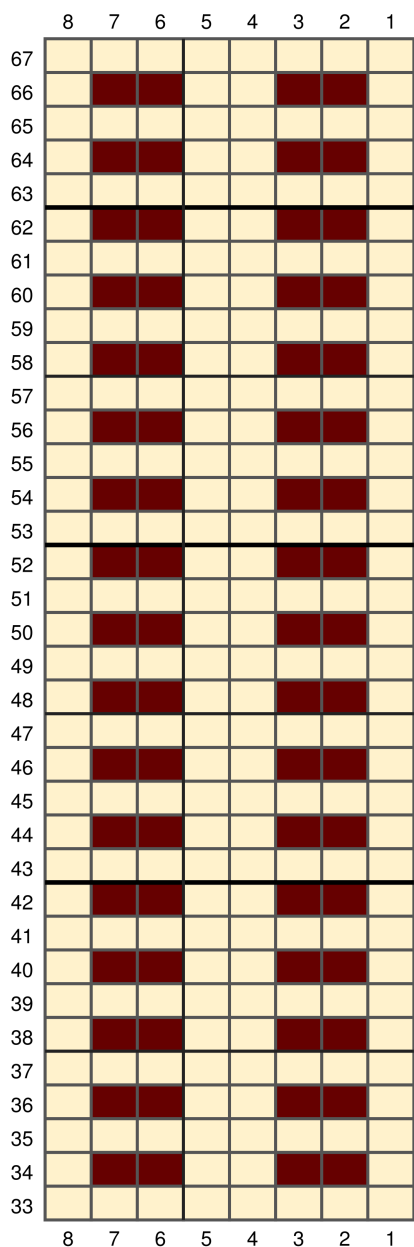
# Charts (cont.)



## Chart C.

## Chart D.

## Chart E.





## Final Prairie Window Yoke Sweater Measurement Chart (inches)

Size:	A	B	C	D	E	F	G	H	I	J	K	L	M
<b>Collar Ribbing (A)</b>	15.0	15.0	16.5	16.5	18.0	18.0	18.0	18.0	18.0	18.0	19.5	19.5	19.5
<b>Neckline circumference (B)</b>	20.0	20.0	22.0	22.0	24.0	24.0	24.0	24.0	24.0	24.0	26.0	26.0	26.0
<b>Yoke Depth from neck (C)</b>	14.0	14.0	14.0	14.0	14.0	14.0	14.0	14.0	14.0	14.0	14.0	14.0	14.0
<b>Bust (D)</b>	36.0	38.0	40.0	42.0	44.0	47.0	50.0	53.0	56.0	59.0	62.0	65.0	68.0
<b>Body Length (E)</b>	14.0	14.0	14.0	14.0	14.0	14.0	14.0	14.0	14.0	14.0	14.0	14.0	14.0
<b>Sleeve inseam (F)</b>	14.0	14.0	14.0	14.0	14.0	14.0	14.0	14.0	14.0	14.0	14.0	14.0	14.0
<b>Upper Sleeve Circumference (G)</b>	12.0	13.0	14.0	14.5	15.0	15.5	16.0	16.5	17.5	18.0	18.5	19.5	20.5
<b>Full Wrist Circumference (H)</b>	7.0	7.0	8.0	8.0	8.0	9.0	9.0	9.0	9.0	10.0	10.0	11.0	11.0
<b>Total yardage</b>	1013	1096	1128	1204	1232	1313	1393	1474	1511	1591	1683	1766	1801
<b>MC, yds</b>	724	783	806	860	880	938	995	1053	1079	1137	1202	1262	1286
<b>CC, yds</b>	290	313	322	344	352	375	398	421	432	455	481	505	514
<b>MC, 109yd/50g balls</b>	7	7	7	8	8	9	9	10	10	10	11	12	12
<b>CC, 109yd/50g balls</b>	3	3	3	3	3	3	4	4	4	4	4	5	5



Special thanks to all of my test knitters, Knit1 Chicago yarn store, and my partner for all the support along the way in creating this pattern <3