

Threeequency Pullover



The Threeequency Pullover is all about repetition and screams “Look at this!” while also making it hard to stare for long.

Knit in Brooklyn Tweed’s Peerie, a lofty fingering weight yarn, this pullover blends the lightness of a fingering weight sweater with the warmth of American Merino wool. Its natural ability to bloom after blocking ensures clean crisp color work that tickles the brain and delights the eye.

The pattern also features tubular cast-on and bound-off edges, as well as roomy straight-fit, 3/4 length arms that end with another colorful flourish and a long cuff.

*Please share your progress pictures and finished pullovers with the hashtag
#ThreeequencyPullover*

*Designed by Tommy Schafer (They/Them)
(@edible_chrome on instagram)*

*Questions or issues with the pattern can be directed
to @tschafer47 on Ravelry or via email to
tschafer47@gmail.com*

This pattern is FREE and should not be sold, feel free to give copies to your friends! If you liked this pattern and would like to support my work and vision of a future with more **pay-if-you-like-it patterns**, contributions can be sent to one of the following:

Venmo: @ToastedBrioche

Paypal: tschafer47@gmail.com

CashApp: \$ToastedBrioche

Or feel free to contact me about other options

Sizes

A,B,C,D (E,F,G,H) [I,J,K,L]

Dimensions

Neck Circumference: 14,16,18,19 (20,22,24,26) [27,28,30,32] inches
35.6,40.6,45.7,48.3 (50.8,55.9,61,66) [68.6,71.1,76.2,81.3] centimeters

Yoke Depth: 7,7.5,8,9 (9.5,10,10,11) [11,11.5,11.5,12] inches
17.9,19.1,20.3,22.7 (23.9,24.8,25.7,28.1) [28.1,29.3,29.3,30.5] centimeters

Yoke Width at Last Color work Row: 40,45,51,54 (57,62,68,74) [77,80,85,91] inches
101.6,114.3,129.55,137.1 (144.7,157.4,172.7,187.9) [195.5,203.2,215.9,231.1] centimeters

Bust: 30,36,38,41 (43,48,53,58) [60,63,68,72] inches 78.2,90.7,96.9,103.2
(109.4,121.9,134.4,146.9) [153.2,159.4,171.9,184.4] cm (meant to be worn between 0 and 4"(10 cm) of ease, when in doubt I would say go slightly larger on your size so there's room to wear an undershirt)

Body Length*: 13 inches (33 cm)

Sleeve Inseam*: 15 inches (38 cm)

*easily adjustable by knitting more or fewer rounds.

Materials

Suggested Needles

(A) Ribbing

- 1 US #3 (3.25mm) circular 16" or 12" for size A
- 1 US #3 (3.25mm) circular 32"
- 1 US #3 (3.25mm) set of 5 double-pointed needles
(or 2 sizes (0.5mm) smaller than needle size C)

(B) Color work

- 1 US #6 (4.0mm) circular 16"
- 1 US #6 (4.0mm) circular 24"

(C) Body Stockinette

- 1 US #5 (3.75mm) circular 12" (or shorter than the Upper Sleeve Circumference (F) of your size (see sizing chart at end of pattern))
- 1 US #5 (3.75mm) circular 32"

**Or all widths can be achieved utilizing one long circular if you prefer Magic Loop

At the very least, if one is knitting completely in magic loop, they would need:

- 3 extra long (60") circular needles needle sizes A, B, and C
(Or needles to obtain desired gauge)

Notions

- Stitch markers, 1 unique for BOR, optionally 13,15,17,18 (19,21,23,25) [26,27,29,31] more to mark pattern repeats
- 1 Tapestry needle
- Smooth waste yarn for holding stitches, and provisional cast-on
- Crochet hook size F (3.75mm) or smaller, for crocheted provisional cast-on

Gauge Swatching

I suggest knitting a swatch of the color work Chart 1. using needle size B as well as a stockinette in the round swatch on your size C needles. To determine final fabric and to ensure fit, wet block your swatch and determine needle changes or resizing from this gauge

Gauge

28 stitches and 34 rounds per 4" x 4" square, stockinette in the round on needle size C or color work in the round on needle size B

28 stitches and 45 rounds per 4" x 4", 1x1 ribbing in the round on needle size A

Yarn

Brooklyn Tweed, Peerie, Fingering, 100% American Merino (210yds/50g)

5,6,7,7 (7,8,9,10) [10,11,12,13] skeins MC (Color "Fleet")

2,2,2,2 (2,2,3,3) [3,3,3,3] skeins CC (Color "Tincture")

Yardage

Total: 1264,1427,1620,1702 (1784,1977,2206,2477) [2594,2738,2946,3189] yards

1383,1561,1772,1862 (1952,2163,2413,2709) [2837,2995,3222,3488] meters

MC: 994,1127,1276,1343 (1409,1558,1743,1983) [2071,2199,2363,2576] yards

1088,1233,1396,1469 (1541,1704,1907,2169) [2265,2405,2585,2818] meters

CC: 270,300,345,360 (375,420,464,495) [524,539,583,614] yards

296,329,378,394 (411,460,508,542) [574,590,638,672] meters

(Note: yardages are calculated with the pattern standard 13" body, 15" sleeve, and all 83 rnds of the yoke design. If you want longer sleeves or body length you will need more yarn in MC. 3% has also been added to all yardage calculations to ensure no one is playing "yarn chicken")

Techniques, Special Stitches

Provisional Cast On: This is my new favorite provisional CO method, with no crochet chain to start, you can simply pull out a single yarn without worrying about catches once the CO is complete. See "Way #2" in the link, there is also a helpful video link in this instructional page: <https://www.10rowsaday.com/provisional-caston>

Two-handed stranded color work in the round: Brooklyn Tweed has a great tutorial on this here: <https://brooklyntweed.com/pages/stranded-colorwork-101>

I highly recommend holding the MC in the right hand and the CC in the left hand and when floats are more than 7 sts wide, holding the CC in between the needles and the wrap of the MC to hold the float on the WS of the work.

Kitchener Stitch: I prefer this Purl Soho Tutorial for learning Kitchener Stitch

<https://www.purlsoho.com/create/kitchener-stitch-video/>

Tubular CO and BO: This is explained in the body of the pattern instructions but extra resources can be found here <https://verypink.com/2011/12/01/tubular-bind-off/>

Abbreviations

K: Knit

P: Purl

Sl: Slip

St(s): Stitch(es)

K2tog: Knit 2 together

(1 stitch decreased)

SSK: Slip 2 sts knit wise to the right
needle, Knit together through back loops
(1 stitch decreased)

M1B: pickup right leg of the stitch below
the next stitch and lift onto left needle.

Knit 2 stitches in color indicated

(1 stitch increased)

Pwise: Purl wise

Wyib: With yarn in back

Wyif: With yarn in front

Kfb: Knit into front and then back of stitch

Ktbl: Knit through back loop of stitch

BOR: Beginning of round

Rnd(s): round(s)

CO: Cast On

BO: Bind Off

MC: Main Color

CC: Contrast Color

RS: Right Side

WS: Wrong Side

Pm: Place marker

--: Repeat between asterisks number of
times specified

yd(s): Yard(s)

Instructions

Using a waste yarn, 16" or 12" circular in needle size A and crochet hook, provisionally
CO 98,112,126,132 (140,154,168,182) [188,196,210,224] sts.

Place BOR marker and join in the round, being careful not to twist.

Tubular CO Rnds:

Rnd A: * K1, Sl1 Pwise wyif * across rnd

Rnd B: * Sl1 Pwise wyib, P1 * across rnd

Main Ribbing

Work 10 rnds of * K1, P1 * across each rnd.

Switch to needle size B in the next rnd you work.

For Sizes ,-, -,D (-, -, -) [l, -, -,]

When following the next instructions, work ONLY the very 1st stitch of rnd 1 as a Kfb
with MC to ensure correct stitch count to start the chart. Do not repeat for other chart
repetitions in this rnd.

98,112,126,133 (140,154,168,182) [189,196,210,224] sts

Begin working Chart 1. from bottom right corner, reading right to left 14,16,18,19
(20,22,24,26) [27,28,30,32] times across each rnd. If you wish you can place a marker
between each chart repeat to help keep track.

As you encounter sections outlined in black boxes, you will work these a **total** of:

Rnds 2-4: 1,1,2,2 (3,3,3,3) [3,3,3,3]

Rnd 19: 10,14,12,13 (11,14,14,14) [14,14,14,14]

Rnds 31-33: 1,1,2,2 (3,3,3,3) [3,3,3,3]

Rnds 36-37: 2,2,2,4 (4,4,4,4) [4,4,4,4]

Rnds 39-41: 2,2,2,3 (3,3,3,3) [3,3,3,3]...(this instruction continues on next page)

times depending on your size and yoke depth you desire. If your pattern size has a shorter yoke depth than desired you can add rnds of MC after finishing the yoke or add repeats of the outlined black boxes in chart 1.

After completing chart 1, you will have worked a total of 60,64,68,76 (80,83,86,94) [94,98,98,102] rnds and should have 20 stitches per repeat or 280,320,360,380 (400,440,480,520) [540,560,600,640] stitches total.

For Sizes -, -, -, - (-, -, G, H) [I, J, K, L]

Switching to needle size C, Knit -, -, -, - (-, -, 3, 11) [11, 15, 15, 19] additional rows of MC before proceeding to get your yoke to the full measurement cited in the pattern.

Break both MC and CC if you're going to block your yoke before proceeding. Otherwise just break CC.

If you used markers between repeats, remove these, keeping BOR marker in place.

Block to size before splitting sleeves (to check for sizing)

Split half the stitches onto another long circular needle and block your yoke, needles and all. After soaking is complete, drain off your water, then roll in a towel and press the water out by stepping on the roll. Unroll and give your yoke a quick shake in the air. Block by pinning and drying to the measurements for your size. These should be:

Neck Circumference: 14, 16, 18, 19 (20, 22, 24, 26) [27, 28, 30, 32] inches
35.6, 40.6, 45.7, 48.3 (50.8, 55.9, 61, 66) [68.6, 71.1, 76.2, 81.3] centimeters

Yoke Depth: 7, 7.5, 8, 9 (9.5, 10, 10, 11) [11, 11.5, 11.5, 12] inches
17.9, 19.1, 20.3, 22.7 (23.9, 24.8, 25.7, 28.1) [28.1, 29.3, 29.3, 30.5] centimeters

Yoke Width at Last Color work Row: 40, 45, 51, 54 (57, 62, 68, 74) [77, 80, 85, 91] inches
101.6, 114.3, 129.55, 137.1 (144.7, 157.4, 172.7, 187.9) [195.5, 203.2, 215.9, 231.1] centimeters

After blocking is complete, try on your yoke and ensure that it fits to your liking, and is adequately below your underarm for splitting the sleeves.

Slip all stitches back onto your longest circular needle of needle size C, to begin working stockinette in the round.

Split Sleeves

From BOR, and reattaching MC,
K 44, 50, 56, 59 (62, 68, 75, 81) [84, 87, 94, 100] sts,
place next 53, 61, 69, 73 (77, 84, 91, 99) [102, 106, 113, 121] sts on waste yarn
Backwards Loop CO 13, 17, 13, 15 (17, 20, 23, 27) [28, 30, 33, 37] sts,
K 86, 98, 110, 116 (122, 136, 148, 160) [168, 174, 186, 198] sts of front yoke edge
Place next 53, 61, 69, 73 (77, 84, 91, 99) [102, 106, 113, 121] sts on waste yarn,
Backwards Loop CO 13, 17, 13, 15 (17, 20, 23, 27) [28, 30, 33, 37] sts
K 44, 50, 56, 59 (62, 68, 75, 81) [84, 87, 94, 100] sts of Right Back to BOR.

You should now have 200,232,248,264 (280,312,344,376) [392,408,440,472] sts in the round for the body.

Body

Main fabric pattern (Chart 3.)

Knit 10 rnds
Ktbl across rnd
K across rnd
Ktbl across rnd
K across rnd
Ktbl across rnd

Work the *main fabric pattern* until your body length measures 12" or 1" less than desired length.

Using needle size A, 32" circular
Rnds 1-10: *K1 P1* to end of rnd.

Work Tubular Bind Off

K1, Sl1wyif across rnd
Sl1wyib, P1 across rnd.

Using another needle of the same or slightly smaller size: * Sl1 to front needle, Sl1 to second needle* across rnd.

You will now Kitchener stitch the stitches from each needle together. Break yarn of length slightly over 3 times longer than the entire distance you are going to Kitchener stitch. By size this is: 3,4,4,4 (4,5,5,6) [6,6,7,7] yards

Work Kitchener stitch across all stitches, then break yarn leaving an 8" tail.

Sleeves (Make 2, one from each set of held stitches)

Slip 53,61,69,73 (77,84,91,99) [102,106,113,121] sts of the right sleeve split onto a 16" circular in needle size C and remove waste yarn.

Starting from the right side with RS facing, pickup and knit 6,8,6,7 (8,10,11,13) [14,15,16,18] sts from underarm CO edge, place BOR marker, pickup and knit 7,9,7,8 (9,10,12,14) [14,15,17,19] more sts from underarm CO edge.

K across 53,61,69,73 (77,84,91,99) [102,106,113,121] sts on needle,
6,8,6,7 (8,10,11,13) [14,15,16,18] picked up sts to BOR.
66,78,82,88 (94,104,114,126) [130,136,146,158] sts

Work main fabric pattern (Chart 3) 4 times.
K 9 rnds.

When knitting the next rnd, K2tog 2,14,2,8 (14,8,2,14) [2,8,2,14] times evenly across next rnd to end up with 64,64,80,80 (80,96,112,112) [128,128,144,144] stitches before beginning the color work sleeve detail.

Switch to your smallest circular needle or DPNs in size B when working color work. Attach CC and begin working Chart 2. from bottom right corner, reading right to left 4,4,5,5 (5,6,7,7) [8,8,9,9] times across each rnd. If you wish you can place a marker between each chart repeat to help keep track.

After completing Chart 2., break CC and switch to needle size A DPNs in next rnd.

Cuff Decrease

K2, K2tog across rnd. 48,48,60,60 (60,72,84,84) [96,96,108,108] stitches.

Using needle size A DPNs,
Rnds 1-40: *K1 P1* to end of rnd.

Work Tubular Bind Off

K1, Sl1wyif across rnd

Sl1wyib, P1 across rnd.

Using 2 circular needles of the same or slightly smaller size: * Sl1 to front needle, Sl1 to second needle* across rnd.

You will now Kitchener stitch the stitches from each needle together. Break yarn of length slightly over 3 times longer than the entire distance you are going to Kitchener stitch. By size this is: 2,2,3,3 (3,3,4,4) [4,4,5,5] **feet**.

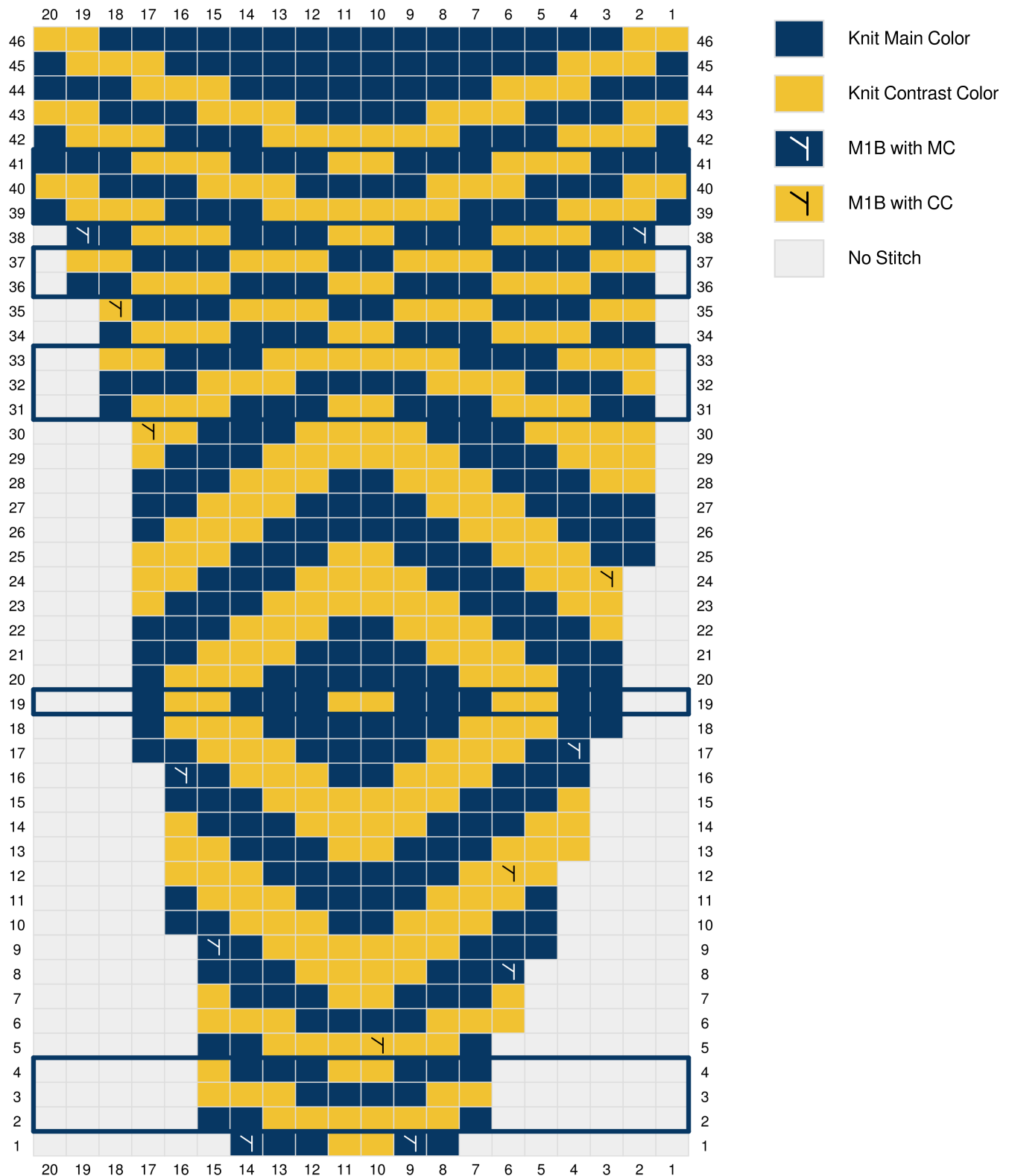
Using a tapestry needle and starting with the first stitch on the front needle, work Kitchener Stitch across all stitches, then break yarn leaving an 8" tail.

Repeat instructions for the second sleeve on the other side of held stitches.

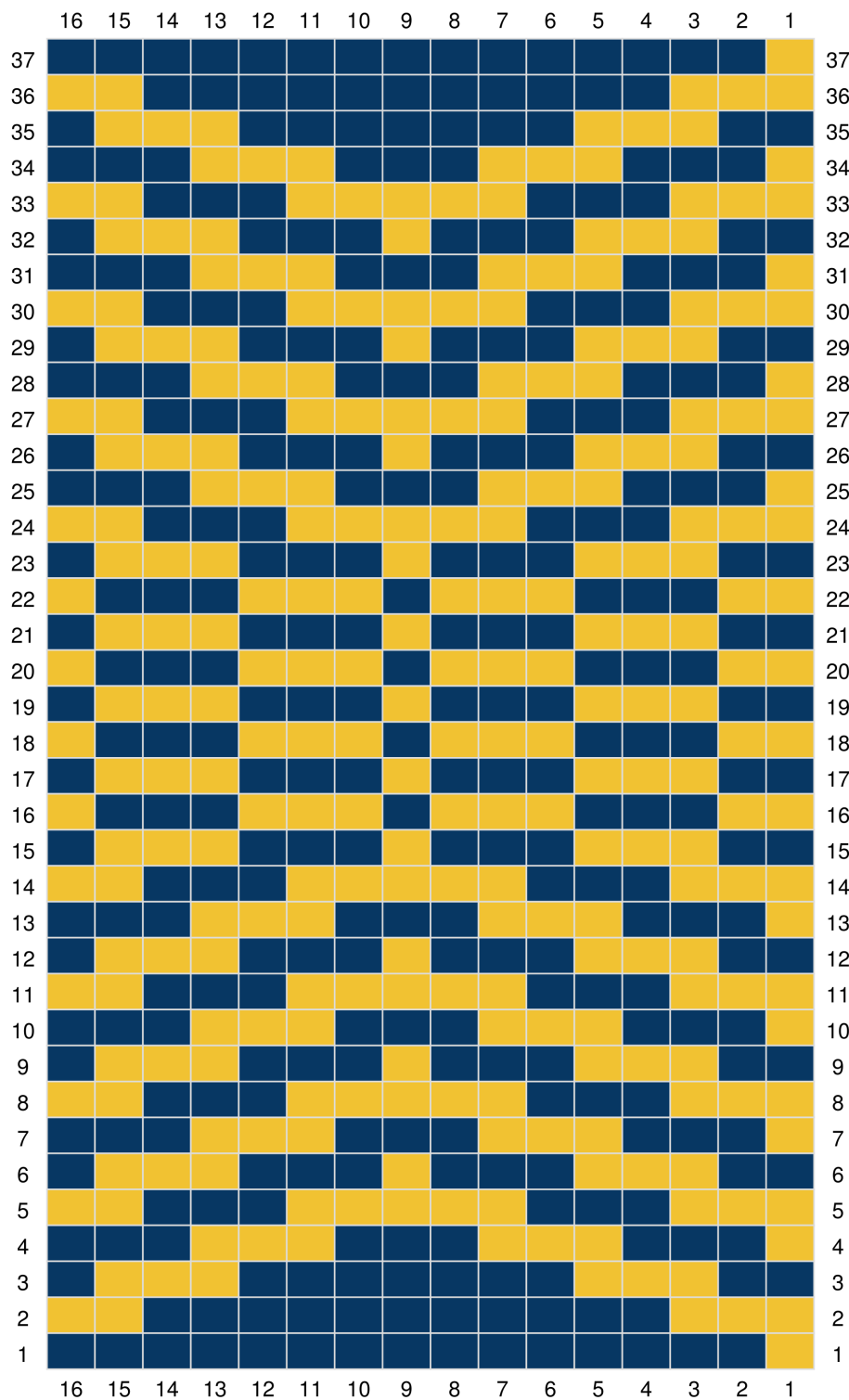
Finishing

Wet block sweater to measurements. Tighten any loose holes created in the underarms with extra yarn and close gaps at the BOR on tubular edges using 8" tails. Weave in all ends.

Charts
Chart 1.



Charts (continued)
Chart 2.







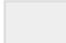
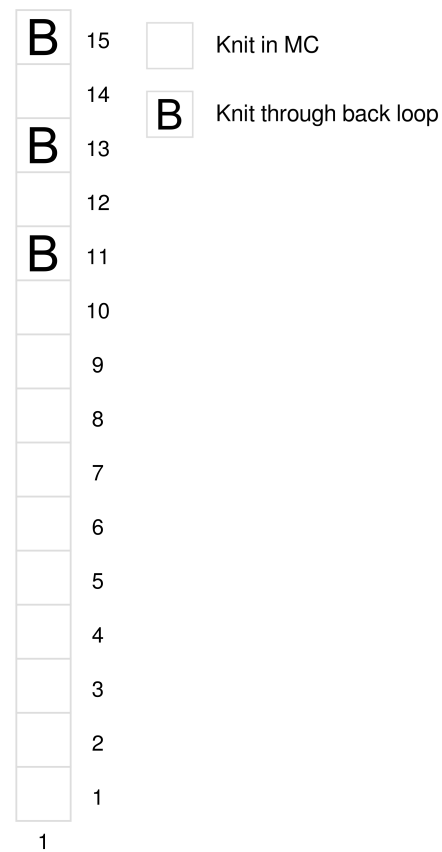


-  Knit Main Color
-  Knit Contrast Color
-  M1B with MC
-  M1B with CC
-  No Stitch

Chart 3. Main Fabric Pattern



-  Knit in MC
-  Knit through back loop

Size Chart and Details (Standard and Metric)

Sizing (in/yds)	A	B	C	D	E	F	G	H	I	J	K	L
Neck Circumference (A)	14	16	18	19	20	22	24	26	27	28	30	32
Yoke Depth (B)	7	7.5	8	9	9.5	10	10	11	11	11.5	11.5	12
Bust (C)	30	36	38	41	43	48	53	58	60	63	68	72
Body Length (D)	13	13	13	13	13	13	13	13	13	13	13	13
Sleeve Inseam (E)	15	15	15	15	15	15	15	15	15	15	15	15
Upper Sleeve Circumference (F)	10	12	12.5	13.5	14.5	16	17.5	19	20	21	22.5	24.5
Wrist Cuff Circumference (G)	7.5	7.5	9	9	9	11	13	13	14.5	14.5	16.5	16.5
Total yards	1264	1427	1620	1702	1784	1977	2206	2477	2594	2738	2946	3189
Yards MC	994	1127	1276	1343	1409	1558	1743	1983	2071	2199	2363	2576
Yards CC	270	300	345	360	375	420	464	495	524	539	583	614
Skeins Peerie MC	5	6	7	7	7	8	9	10	10	11	12	13
Skeins Peerie CC	2	2	2	2	2	2	3	3	3	3	3	3
Sizing (cm/m)	A	B	C	D	E	F	G	H	I	J	K	L
Neck Circumference (A)	35.6	40.6	45.7	48.3	50.8	55.9	61	66	68.6	71.1	76.2	81.3
Yoke Depth (B)	17.9	19.1	20.3	22.7	23.9	24.8	25.7	28.1	28.1	29.3	29.3	30.5
Bust (C)	78.2	90.7	96.9	103.2	109.4	121.9	134.4	146.9	153.2	159.4	171.9	184.4
Body Length (D)	33	33	33	33	33	33	33	33	33	33	33	33
Sleeve Inseam (E)	38.1	38.1	38.1	38.1	38.1	38.1	38.1	38.1	38.1	38.1	38.1	38.1
Upper Sleeve Circumference (F)	25.8	30.5	32	34.4	36.7	40.6	44.5	49.2	50.8	53.1	57.1	61.7
Wrist Cuff Circumference (G)	18.8	18.8	23.4	23.4	23.4	28.1	32.8	32.8	37.5	37.5	42.2	42.2
Total meters	1383	1561	1772	1862	1952	2163	2413	2709	2837	2995	3222	3488
Meters MC	1088	1233	1396	1469	1541	1704	1907	2169	2265	2405	2585	2818
Meters CC	296	329	378	394	411	460	508	542	574	590	638	672

Construction Diagram

